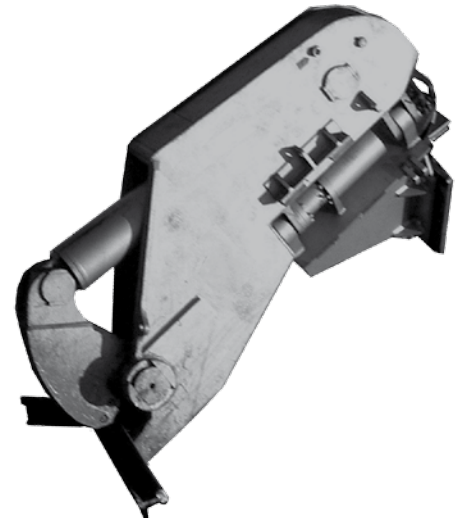


RC 26 R

Mobile Rail Cutter

The mobile **DART RENTALS** Rail Cutter RC 26 R is a special development for the controlled demolition of rail systems and for the scrap preparation of railway lines. More than 20 years of experience in shear manufacturing guarantees a high quality level and lead to huge availability.

Mounted directly to the dipper stick, the mobile Rail Cutter RC 26 R is ideal for excavators with an operating weight of 16 - 28 t.



Special version for the US market: **Mobile Rail Cutter RC 26 R A**

- inverted hydraulic cylinder for increased rod protection
- large, heavy duty bearings for reduced bushing wear
- housing made of wear-resistant, fine-grained steel
- highly efficient: cuts up to 15 t/ hr of standard quality Vignol rails (S7 to UIC60)
- heavy duty 180° rotation

RC 26 R Mobile Rail Cutter

	Service Weight	Length	Jaw Opening	Jaw Depth	Operating Weight
	(w/o adapter)	A	B	C	(at dipper)*
	kg	mm	mm	mm	t
RC 26 R	2800	2550	205	205	16 - 26

* decisive for the choice of the shear is the payload of the excavator

Requirements of Excavator

	RC 26 R	Back pressure
Operating pressure:	Hydr. Cylinder: max. 35 MPa (350 bar) Rotation: max. 20 MPa (200 bar)	0,5 MPa (5 bar)
Pump capacity:	max. 250 l/min. (Hydraulic - Cylinder), 18 - 25 l/min. (Rotation)	

Technical Drawing

RC 26 R (european version)

