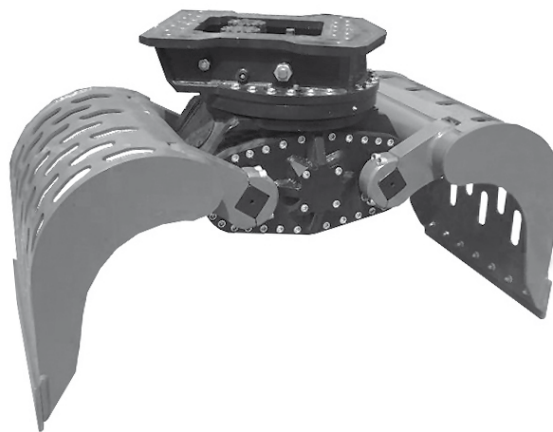


DRG-9-DD / DRG-18-DD

Demolition and Sorting Grab with DemaDrive

Demolition and sorting grab with the maintenance-free DemaDrive for excavators up to 9t or 18t operating weight – the universal tool for all kind of light demolition and sorting work.

- DemaDrive – the revolutionary concept for hydraulically operated grabs! The rotation of the arms of the grab is generated by two hollow shafts, which run opposed and have a helix thread, hydraulically driven by a single piston. No hydraulic cylinder!
- 50% longer life cycle. The drive unit runs in a permanent oil bath – no lubrication necessary. Resistant against dirt and blows, due to the compact design
- constant closing forces during the entire operation
- different applications possible through easy exchange system
- the perforated skin of the shells lets fine dust and gravel through without larger pieces blocking the shell filter system
- integrated non-return valve guarantees secure retention of the loads
- long life is ensured due to the use of 400 HB steel in the manufacture of cutting edges (usable both sides) (DRG-18-DD: CRACOX Plus 450)



Demolition and Sorting Grab DRG-9-DD / DRG-18-DD

Type	Width B (mm)	Opening range A (mm)	Height C (mm)	Volume (litre)	Weight* (kg)	Load capacity (kg)	Closing force (kN)	Operating weight** (t)
DRG-9-DD	600	1400	1010	150	360	1000	18	5 - 9
DRG-18-DD	1000	1900	1360	580	1085	5000	30	14 - 18

Package consists of: demolition- and sorting grab, rotator, non-return valve, cutting edges
 * depending on adapter plate ** Weights are to be seen as index

Rotator

Integrated in a single unit with the DemaDrive, no more connecting hoses. Continuous rotation. Overload protection ensured by pressure relief valves.

Type	Upper connection (Width/Ø hole pattern) (mm)	Torque (Nm)	Moment of deflection max. (Nm)
DRG-9-DD: KM 15F 273/273	10 x M16 / Ø 273	2000	50000
DRG-18-DD: hydraulic rotator with 2 motors	Cat 130/140	5000	115000

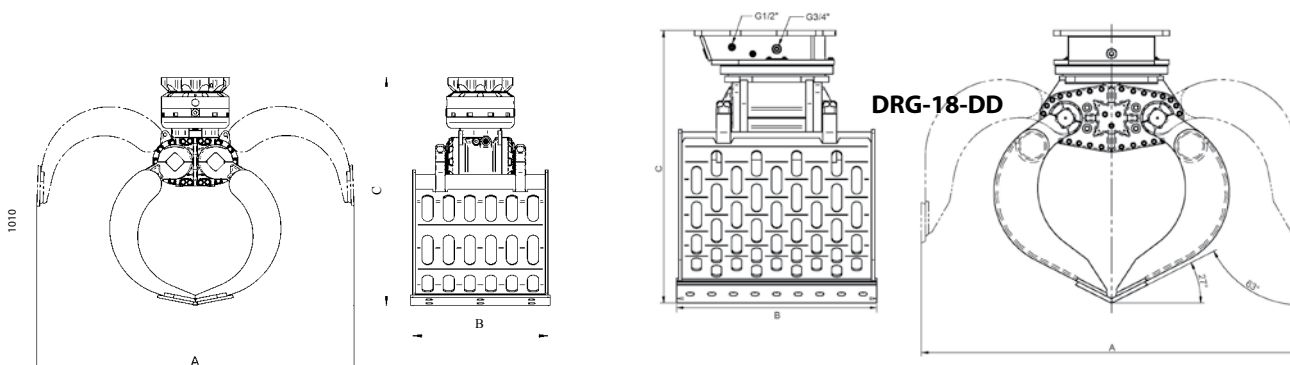
Accessories

Type	Description
	Suspension and adapter plates from all manufacturers available

Requirements of Excavator

	DRG-9-DD	DRG-18-DD
Operating pressure:	320 bar (32 MPa), internal working pressure of 260 bar (26MPa)	210 bar (21 MPa, rotate) / 350 bar (35MPa, grab)
Pump capacity:	40 - 75 l/min	40 - 60 l/min (rotate) / 50 - 150 l/min (grab)

Technical Drawings



DRG-9-DD

